

Friday 8th March 2019

Our Christian Value for the term: Forgiveness

'It takes a strong person to say sorry, and an even stronger person to forgive' (Anon)

Dear Parents,

Thank you to everyone who made such a wonderful effort with costumes for World Book Day. The children looked fabulous and it was very evident that a lot of thought had gone into many of them! The children really enjoyed their day yesterday and they did a lot of activities around reading and celebrating stories and books. The potatoes were also brilliant. Thank you to those parents who helped at home and to all the children who showed such creativity and skill. It was a very difficult job judging the competition because all of the entries were amazing but in the end we chose the following winners and runners up:



Phase	Runners Up	Winner
EYFS	Sophie (Cherry) Ruby (Lime)	Freya W (Lime)
KS1	Matilda Q (Pear) Andrei (Holly)	Uma (Juniper)
Y3 and 4	Emilia (Maple) Thomas H (Maple)	Leah (Willow)
Y5 and 6	Phoebe M (Elm) Maisie (Ash)	Eva W (Elm)



The winners all received a £5 book token for the Yellow Lighted Bookshop.

Next Friday is Comic Relief and we are keeping it simple and inviting the children to come to school dressed in red. Children will need to make a donation of £1 to Comic Relief. Thank you.

We would also like to thank St Mary's Church congregation for the donation of £76 from their recent collection.

Mrs J Woolley
Headteacher

news

from our
caring **curious** **courageous**
learning family

Friday 8th March 2019

Our Christian Value for the term: Forgiveness

'It takes a strong person to say sorry, and an even stronger person to forgive' (Anon)

Some of the Fantastic World Book Day Costumes



Friday 8th March 2019

Our Christian Value for the term: Forgiveness

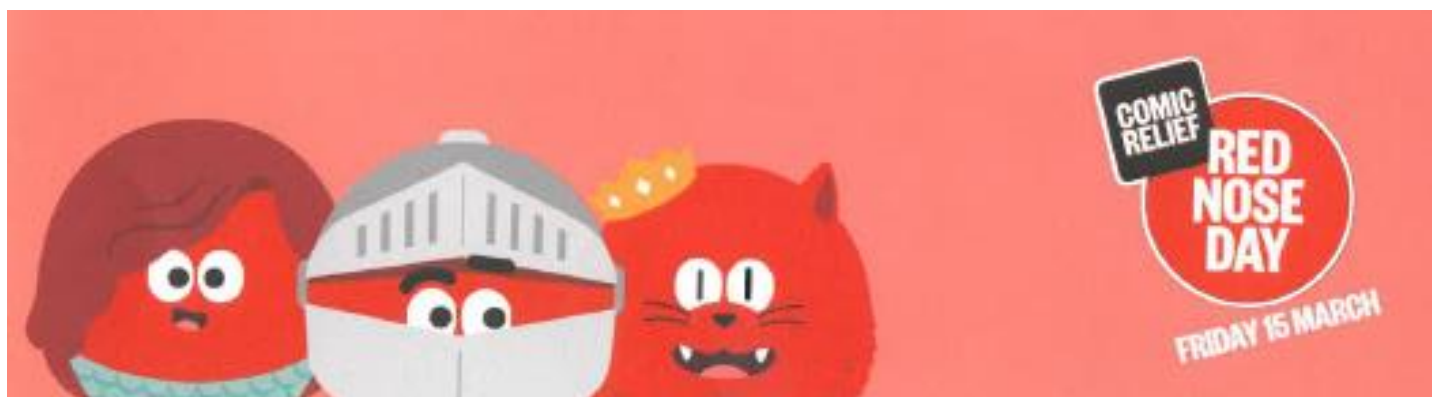
'It takes a strong person to say sorry, and an even stronger person to forgive' (Anon)

School Diary

15 th March	Red Noses on sale.	22nd March	Panathlon @ Cirencester College
Mon 11 th March	Scholastics Book Fair 3.15 – 4pm	26 th March	Dance Festival @SWR 1.15pm–2.45pm years 2, 5 and 6
12 th March	Year 3 Clearwell Caves	27 th March	Multiskills Year 1 @ SWR 9.15am – 11.30am
15 th March	Red Nose Day – Dressing Up in Red	27 th March	Faith Explorers Collective Worship 2.45pm (parents welcome)
18 th March	Parents Evening 3.30pm – 5.30pm	28 th March	Reception and year 1 Dental Survey
19 th March	Kingshill School Netball final	1 st April	Swimming Gala
20 th March	Tag Rugby @Cirencester RFC Year 3/4	3rd April	Multiskills reception @ SWR 9.30am – 11.00am
20 th March	Parents Evening 4.00pm – 7.00pm	4 th April	Grab a Grown Up KS1 early years
20 th March	Multiskills Year 2 @ SWR 9.15am – 11.30am	5 th April	Last day of term
21 st March	Grab a Grown Up KS1 early years	23rd April	First day of term

Comic Relief Red Nose Day

For Red Nose Day, for a donation of a gold coin, please wear something red to school for the day Friday 15th March. Red Noses are still available to buy from the School Office £1.25 per nose.



Friday 8th March 2019

Our Christian Value for the term: Forgiveness

'It takes a strong person to say sorry, and an even stronger person to forgive' (Anon)

Parents Evening – Online Booking System

Parents Evening will be held on Monday 18th March and Wednesday 20th March. If you haven't already done so please visit <https://stmarystetbury.parenteveningsystem.co.uk> to book your appointments. To logon you will need your name, email address and name and date of birth of one of your children. **If you have had structured conversations with your child's class teacher you do not need to make a Parents Evening appointment.**

If you do not have internet access please contact Mrs Glover and Mrs Howe in the School Office.

Be a WINNER with PTFA 100 Club – Cash prizes

The 100 club – a great way for you to support us whilst having a bit of a flutter! Here's how it works:

Pay a one-off fee of £10. This buys you one membership number which enters you into the monthly draw that will run from March to July 2019. The draws will take place at school during the Friday Celebration Service nearest the 15th of each month.

Two winners win a cash prize every month!

Entry forms (see end of this newsletter) to be returned as soon as possible. The first prize draw will be Friday March 15th

**st
mary's
ptfa**



Remember...Chatter Matters!

It would be great if you could spend a few minutes talking to your child. Please encourage other family members to join in with the conversation.

It's good to talk ☺

EYFS Chatter matters...

What is your favourite book? Which character do you like in it, and why? Who did you dress up as for World Book Day?



Friday 8th March 2019

Our Christian Value for the term: Forgiveness

'It takes a strong person to say sorry, and an even stronger person to forgive' (Anon)



Textile Recycler

The bin is located in the carpark by the Yr3/4 playground and all your donations are gratefully received. Please keep filling it up. The items are collected every two weeks, but if you find the bin full when you use it please let us know in the School Office so that we can arrange for it to be emptied. The bin is emptied regularly, but please tell us if you find it full.

Clubs

Faith Explorers



CALLING ALL FAITH EXPLORERS! We are meeting next week - **Wednesday 13th March** – and preparing for our Collective Worship. If you are signed up this term, please make sure you can come along so we have EVERYONE involved in our Collective Worship on Wednesday 27th March at 2.40pm. Many thanks, Poppy, Rob, Sarah, Valerie, Megan and Maisie

Gardening club – donations

Mr Foster is starting his gardening club on Monday and would greatly appreciate any left over plants and soil from all your gardening over the holiday! If you could bring them directly to Mr Foster in Cherry class at drop off or pick up.

Vacancy – Cleaner

We are looking for a hardworking, conscientious and motivated cleaner who will take pride in helping us look after our school; providing a safe, clean and pleasant environment in which our children learn. If you or someone you know may be interested in this vacancy please see the full details on our school website. <http://www.stmarystetbury.com/the-office/current-vacancies>

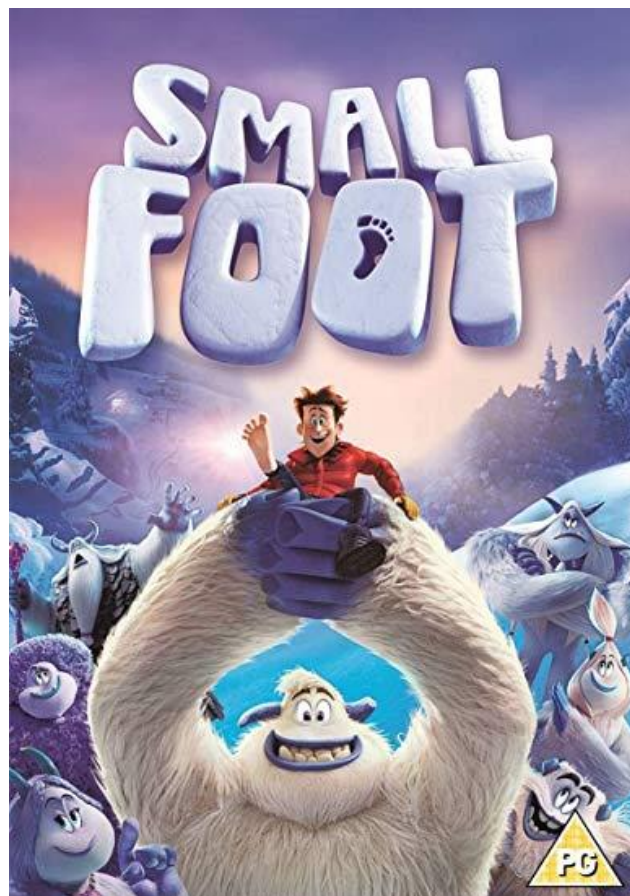
Friday 8th March 2019

Our Christian Value for the term: Forgiveness

'It takes a strong person to say sorry, and an even stronger person to forgive' (Anon)

TETBURY GOODS SHED

A R T S C E N T R E



Saturday 9th March 2019 at 10.30am
DOORS OPEN 10.00am Rated PG

St. Mary's KS2 Parents and children come along free!
Showing on behalf of the Tetbury Lions

Friday 8th March 2019

Our Christian Value for the term: Forgiveness

'It takes a strong person to say sorry, and an even stronger person to forgive' (Anon)

quick first aid Head Lice Awareness

Head Lice are small, six-legged wingless insects about the size of a pin-head when fully grown and grey/brown in colour. Head Lice cannot jump or fly, they spread by clambering from one head to another so children can be most commonly infected through head to head contact during school or play.

Lice hang on tight to the hair, usually close to the scalp where there is warmth, food and shelter from detection. They feed by biting and sucking blood from their host and a female louse will lay eggs in sacs known as 'nits', these hatch within 7-10 days and the lice will then take another 6-14 days to become fully grown and then capable of reproduction. A head louse infection is annoying and sometimes uncomfortable but it is not harmful or dangerous.

A regular check by wet combing is recommended and lice can be treated easily with the various products that are available, however these will not guarantee protection against further infection at a later date, so continued weekly detection is recommended.

Please Note:
Head lice do not differentiate between Clean/Dirty Hair or Long/Short Hair, they just like to cling onto any hair and a nice warm and cosy head.

Quick First Aid
Popple Street, Hull, HU9 1LP
Phone: 01482 488488
Fax: 01482 317963
www.quickfirstaid.co.uk
sales@quickfirstaid.co.uk

Head Lice combs are available from the school office at a small charge of £1.

Buy a Heart for £1
and your £1 will feed 3 children

The Lunchbowl Network was set up in 2006 to feed and care for the most vulnerable and destitute children in the Kibera slum in Nairobi, Kenya.

It just costs 33p to provide a nutritious meal.
Come and buy a heart for £1

Thank you for all your support to Lunchbowl.
Asante Sana

Hearts available from the school office (reds pink yellow and purple)

The hearts are available from the School office
(correct change would be much appreciated)

Friday 8th March 2019

Our Christian Value for the term: Forgiveness

'It takes a strong person to say sorry, and an even stronger person to forgive' (Anon)

stmary's
tetbury



St Mary's Saplings

for babies to pre-schoolers

All welcome

Wednesdays term time 1.45pm – 3.00pm

27th February – Gardening

Plant a bulb to take home and watch it grow

6th March – Pancake Day

Come and enjoy some pancakes

13th March – St. Patricks Day

An Irish themed afternoon

20th March – Nature Walk

Welcome the first day of spring by collecting some natural items to make a collage

27th March – Mothers Day

Themed crafts and afternoon tea

3rd April – Easter is here!

Join us for an egg hunt and easter crafts

Friday 8th March 2019

Our Christian Value for the term: Forgiveness

'It takes a strong person to say sorry, and an even stronger person to forgive' (Anon)



Gloucester City Mission operates all year round and relies on donations of goods.

During these cold months we are appealing for donations of;

Clothing in particular sizes 30, 32 & 34 inch –

Mens Jeans

Mens Jogging bottoms

All items must be in a clean condition.

Please bring your donations to the school office for collection by Gloucester City Mission Volunteers, where the clothing will go directly to those who need them.

Thank you in anticipation of your help.

To find out more about the work of Gloucester City Mission please visit our website www.gloscitymission.org.uk
Registered Charity 1115780

Friday 8th March 2019

Our Christian Value for the term: Forgiveness

'It takes a strong person to say sorry, and an even stronger person to forgive' (Anon)

WELCOME TO OUR 100 CLUB!

A great way for you to support the school whilst having a bit of a flutter! Here's how it works...

Complete and sign the below membership form and pay a one-off fee of £10, handed in to the school office by Friday 1st March.

This buys one membership number (we will allocate), which enters you into a monthly draw that will run from March to July. All participants must be over 16.

The draw will take place at school during the Friday Celebration Service nearest the 15th of each month. Two numbers will be drawn each time.

The prize fund will be 50% of the membership fee taken. The remaining 50% goes to the school to help fund equipment, resources and opportunities for pupils. If all 100 tickets are sold then each prize is worth £50!

**To be in with a chance to win
please return this form to school together with your membership fee
ASAP. The first draw will be Friday 15th March!
THANK YOU FOR YOUR SUPPORT AND GOOD LUCK!**

Name (to which cheque will be made out if you win) _____

Telephone no. _____ (daytime) _____ (evening)

Postal address (to which winnings will be sent) _____

I enclose the 100 Club membership fee of £10 in cash/cheque (payable to St Mary's PTFA).

If I win a prize, I do / do not give permission for the PTFA to publish my name on social media and on noticeboards at school. (Delete as appropriate).

Signature _____ Date: _____

Friday 8th March 2019

Our Christian Value for the term: Forgiveness

'It takes a strong person to say sorry, and an even stronger person to forgive' (Anon)

100 CLUB RULES

PURPOSE

The purpose of the 100 Club is to raise funds. The money will be paid into the PTFA bank account and used to meet funding requests from the school, providing equipment, resources and opportunities for pupils.

RULES

1. The 100 Club is a private lottery and is open to all parents, carers, staff and friends of St. Mary's Primary School, Tetbury. Anyone age 16 or over can join.
2. For a cost of £1 per draw you will be allocated one number between 1 and 100. Numbers will be allocated on a first come, first served basis.
3. Two draws will be made every month, running from March 2019 to July 2019.
4. This draw will end at the end of the school year and participants will need to apply again in September 2019 for future draws.
5. The prizes will total 50% of the annual income.
6. This will be apportioned as: 1st prize of 25% and 2nd prize of 25% over 5 months.
7. Numbers are limited to two per household.
8. Payments must be made via cash/cheque to the school office. Cheques should be made payable to St. Mary's PTFA.
9. Member's numbers will only be entered once payment is received.
10. The draw shall be made by the Head Teacher during the Friday Celebration Service that falls closest to the 15th of each month.
11. The winning cheque will be posted to the address on your membership application within one week of the draw.
12. The name and numbers for each month's winners will be posted in the school newsletter and on the school website.
13. The 100 Club will be run by the PTFA. In case of any dispute the decision of the Committee is final.
14. If a winner cannot be contacted, the winnings will be placed into PTFA funds after six months.
15. Once all numbers are sold the PTFA will add names to a waiting list. If there is enough interest we will increase the size of the draw so that more people can take part and more prizes can be won!

Any questions, please contact the PTFA via email [ptfa@st-marys-tetbury.gloucs.sch.uk].

Friday 8th March 2019

Our Christian Value for the term: Forgiveness

'It takes a strong person to say sorry, and an even stronger person to forgive' (Anon)



Tetfest
2019

SATURDAY JULY 13th 2-11pm

SPONSORED BY
 **event trader** & 

noasis

Mick O' Toole Band
UKEY DUKES **Mike Ayliffe**
NIGHTWISH UK Durandau Ballet
BONES LIKE THAT
& dj moggy

WORWELL FIELDS
CIRENCESTER ROAD
TETBURY GL8 8RY

THE TETFEST DISCO BAR
FACE PAINTING
FREE KIDS ENTERTAINMENT AREA

EARLY BIRD TICKETS
UNDER 12s FREE / 12 - 16 yrs £5
OVER 16 yrs £15 / FAMILY TICKET £25
OFFER ENDS APRIL 21ST
AVAILABLE FROM
<https://www.thelittleboxoffice.com/tetfest>
Or TETBURY HARDWARE LONDON RD