

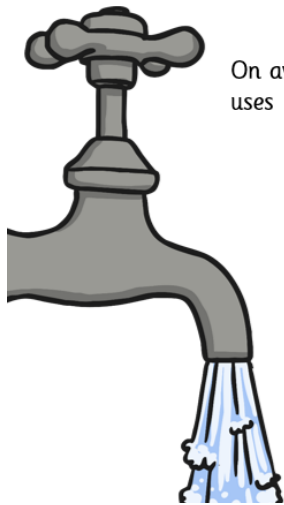
Eco-Warriors



Ecology is the study of the relationships between living things and their surroundings, or environment. Scientists who work in ecology are called Ecologists.

Ecologists examine how living things depend on one another for survival. They also study how living things use natural resources such as air, soil, and water to stay alive.

How much water do we use?



On average, each person in the UK uses 150 litres of water per day.

If you account for the water used in food production, each person uses 3400 litres per day.

30% of the water we use in our houses is for flushing the toilet.

Knowledge Organiser Year 4 Summer

Renewable power sources



Wind turbines turn the energy from the wind into electricity.



Solar panels turn the energy from sunshine into electricity.

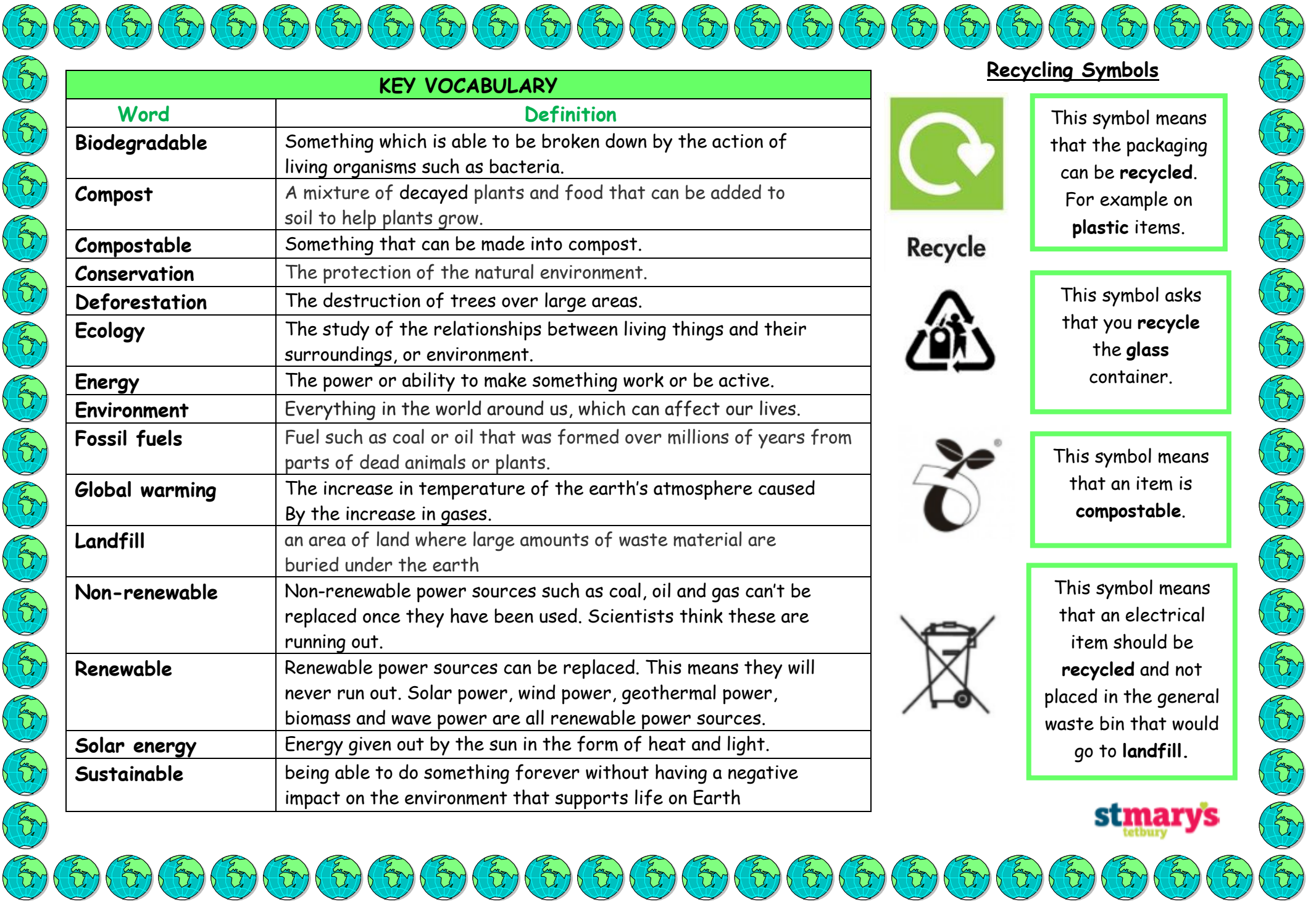


The energy from heat deep underground can be turned into electricity. This is geothermal energy.



Biomass means 'natural material'. It is burned to create energy.





KEY VOCABULARY

Word	Definition
Biodegradable	Something which is able to be broken down by the action of living organisms such as bacteria.
Compost	A mixture of decayed plants and food that can be added to soil to help plants grow.
Compostable	Something that can be made into compost.
Conservation	The protection of the natural environment.
Deforestation	The destruction of trees over large areas.
Ecology	The study of the relationships between living things and their surroundings, or environment.
Energy	The power or ability to make something work or be active.
Environment	Everything in the world around us, which can affect our lives.
Fossil fuels	Fuel such as coal or oil that was formed over millions of years from parts of dead animals or plants.
Global warming	The increase in temperature of the earth's atmosphere caused by the increase in gases.
Landfill	an area of land where large amounts of waste material are buried under the earth
Non-renewable	Non-renewable power sources such as coal, oil and gas can't be replaced once they have been used. Scientists think these are running out.
Renewable	Renewable power sources can be replaced. This means they will never run out. Solar power, wind power, geothermal power, biomass and wave power are all renewable power sources.
Solar energy	Energy given out by the sun in the form of heat and light.
Sustainable	being able to do something forever without having a negative impact on the environment that supports life on Earth

Recycling Symbols



Recycle

This symbol means that the packaging can be **recycled**. For example on **plastic** items.



This symbol asks that you **recycle** the **glass** container.



This symbol means that an item is **compostable**.



This symbol means that an electrical item should be **recycled** and not placed in the general waste bin that would go to **landfill**.